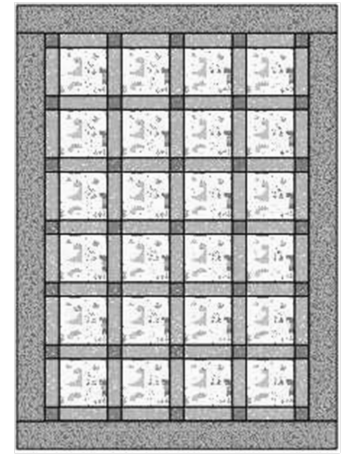


Baby 7 1/2" Squares
Sashing, Cornerstones & One Border
46" X 64"



Fabric Requirements:

- 1 1/4 yard Block Fabric OR (24) 7 1/2" Blocks
- 1 yard Sashing Fabric
- 1/4 yard Cornerstone Fabric
- 1 yard Outer Border Fabric

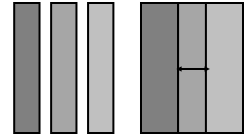
Cutting:

- Blocks: (6) 7 1/2" X WOF, Sub-cut: (24) 7 1/2" X 7 1/2" Squares
- Sashing: (15) 2 1/2" X WOF Strips, Sub-Cut: (58) 2 1/2" X 7 1/2" Rectangles
- Cornerstones: (3) 2 1/2" x WOF Strips, Sub-Cut: (35) 2 1/2" X 2 1/2" Squares
- Outer Border: (5) 4" X WOF Strips

Quilting Tip:

Check 1/4" seam accuracy—Sew three 1 1/2" strips of fabric together with a 1/4" seam. Press in one direction. The center strip should measure exactly 1". If the measurement is different adjust as needed.

Use a 1/4" seam allowance for all seams.



Assembling the Quilt:

1. Sew 7 1/2" x 2 1/2" strip to the left and right side of the first block in the row and the right side of the other 3 blocks as shown below (press all seams toward sashing strips):



2. Sew row together. Make 6 rows. Press all seams toward the squares



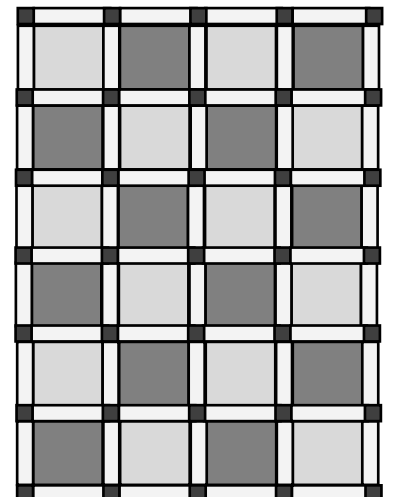
3. Sew cornerstones to (4) 7 1/2" x 2 1/2" strips as shown below.



4. Sew row together. Make 7 rows. Press all seams toward the squares



5. Sew center of quilt together starting with cornerstone/sashing row and alternate with block/sashing row.
6. Press row seams toward squares.
7. Border construction on next page.



One Border Construction

Border Construction:

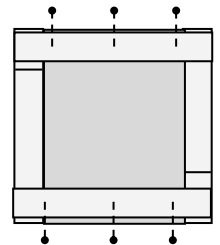
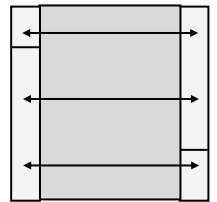
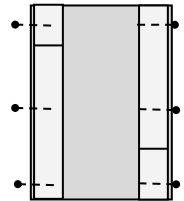
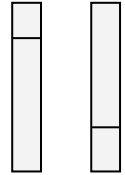
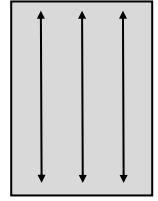
1. Lay the quilt on a flat surface. Find the length of the side borders by measuring the quilt. Take three measurements as illustrated and average them to determine the length to cut the side borders.

Quilting clue—Piece border strips end-to-end to achieve the correct length. Sew the strips together using a 1/4" seam. Press seam allowance open to reduce bulk. Trim the strips so that it matches the quilt length measurement.

2. Cut two side border strips the length of the average measurement of the quilt. Borders cut on the crosswise grain have a little 'give'. Borders cut on the lengthwise grain do not have 'give'.
3. Pin side borders to the quilt at each end and in the center. Ease fullness in between pins as needed. Sew side borders on using a 1/4" seam allowance.

Quilting clue—Place the side with the greatest fullness next to the feed dogs. The feed dogs will help ease in the fullness. Set stitches. Press seams toward borders.

4. Find the top and bottom width of the quilt by measuring across the quilt and side borders. Take three measurements as illustrated and average them to determine the length to cut your top and bottom borders.
5. Cut top and bottom border strips the average width of the quilt. Borders cut on the cross-grain have a little 'give'. Borders cut on the lengthwise grain do not have 'give'. If your border needs to be eased to the quilt use the crosswise grain.
6. Pin top and bottom borders to the quilt at each end and in the center. Sew top and bottom borders on using a 1/4" seam allowance.



Return finished top and extra fabric to:

Stitching Hearts Worldwide:
90 S. Main St.
Pleasant Grove, Utah 84062

